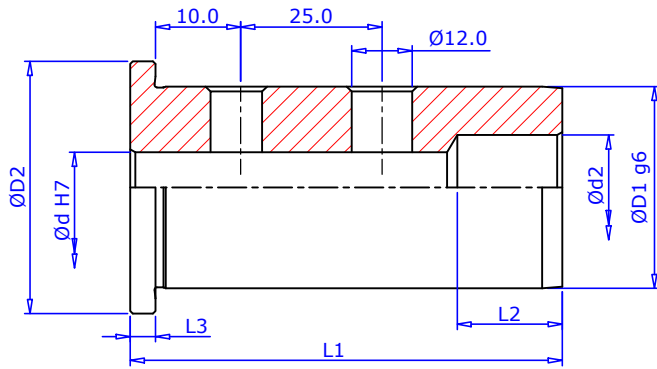
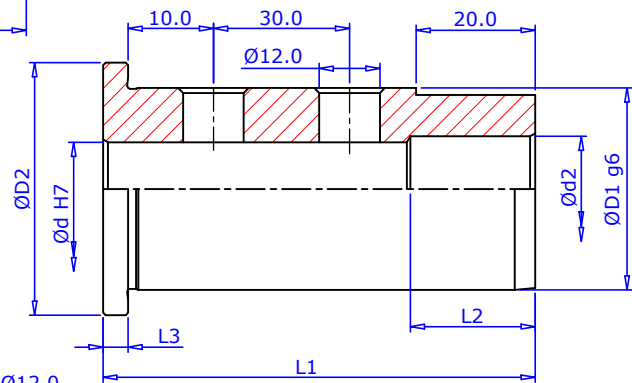


# CNC SLEEVES

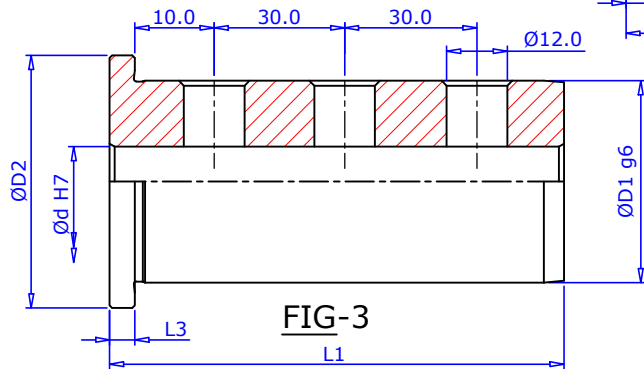
## REDUCTION CNC SLEEVES.



**FIG-1**



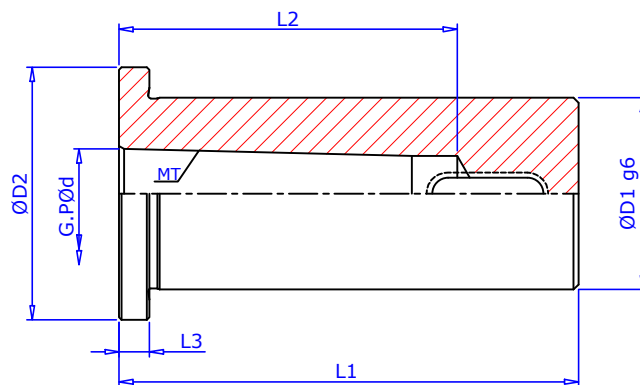
**FIG-2**



**FIG-3**

Maximum runout of external dia to the internal dia 0.005mm

## MORSE TAPER CNC SLEEVE.



**FIG-4**

Maximum runout of external dia. to internal taper 0.005mm.

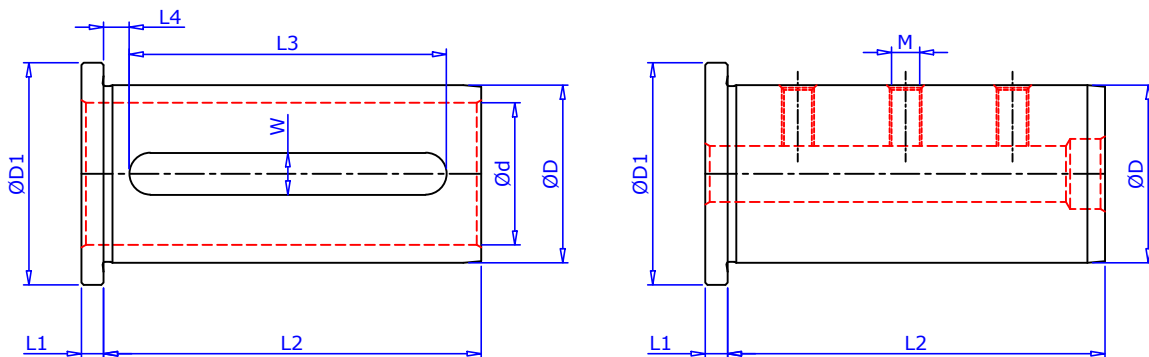
## REDUCTION CNC SLEEVES.

DESIGNATION	ΦD1 h6	ΦD2	Φ d	Φ d2	L1	L2	L3	TAPER NO	FIG
CLY 32 / 8	32	39	8	10	85	45	5	-	1
CLY 32 / 10	32	39	10	12	85	45	5	-	1
CLY 32 / 12	32	39	12	14	85	45	5	-	1
CLY 32 / 16	32	39	16	18	85	35	5	-	2
CLY 32 / 20	32	39	20	-	85	-	5	-	3
CLY 32 / 25	32	39	25	-	85	-	5	-	3
CLY 32 / MT-1	32	-	12.065	-	91	56	-	MT-1	4
CLY 32 / MT-2	32	-	17.780	-	91	67	-	MT-2	4
CLY 32 / MT-3	32	-	23.825	-	105	84	-	MT-3	4
CLY 40 / 8	40	47	8	10	85	45	5	-	1
CLY 40 / 10	40	47	10	12	85	45	5	-	1
CLY 40 / 12	40	47	12	14	85	45	5	-	1
CLY 40 / 16	40	47	16	18	85	35	5	-	2
CLY 40 / 20	40	47	20	-	90	-	5	-	3
CLY 40 / 25	40	47	25	-	90	-	5	-	3
CLY 40 / 32	40	47	32	-	90	-	5	-	3
CLY 40 / MT-1	40	-	12.065	-	91	56	-	MT-1	4
CLY 40 / MT-2	40	-	17.780	-	95	67	-	MT-2	4
CLY 40 / MT-3	40	-	23.825	-	115	84	-	MT-3	4

Ordering Example :- DIA32 d16 -2 Nos

Ordering Example :- DIA32 MT-1 (2 Nos)

## CNC LAHTE TURRET SLEEVE.



Maximum runout of external dia. to internal taper 0.005mm.

Φ D	Φ d	Φ D1	W	L1	L2	L3	L4	M	FIG
40	8, 10, 12	48	-	5	55	-	-	M6	2
40	16, 20, 25, 32	48	12	5	80	73	2	-	1
32	8, 10, 12	38	-	5	47	-	-	M6	2
32	16, 20, 25	38	10	5	60	52	3	-	1
25 *	8, 10, 12	33	-	5	50	-	-	M6	2
25 *	16	33	10	5	50	42	3	-	1
20 *	8, 10	28	-	5	50	-	-	M5	2
20 *	12	28	9	5	50	42	3	-	1
16 *	8	24	-	5	40	-	-	M4	2
16 *	10	24	7	5	40	32	3	-	1

\* Marked items only manufactured against certain MOQ (minimum order quantity)

Ordering Example :- DIA40 Ø8.0 -2 Nos

All Details are subject to change without notice.