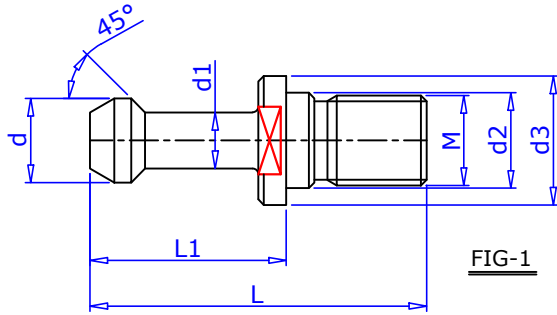
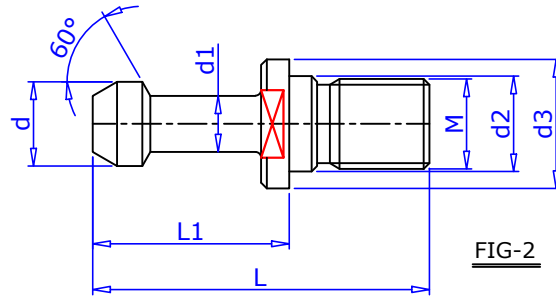


## PULL STUDS WITHOUT THROUGH COOLANT.



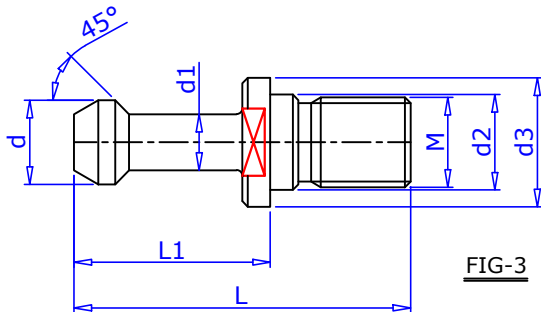
PULL STUDS MAS BT

FIG-1



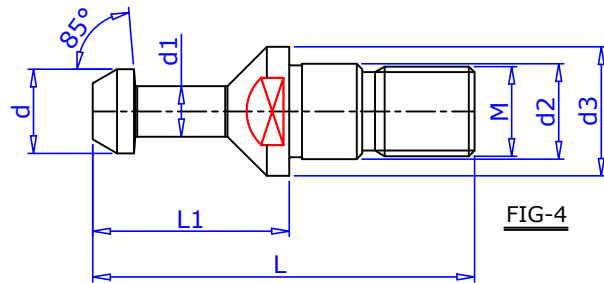
PULL STUDS MAS BT

FIG-2



PULL STUDS ISO 7388 /2-B

FIG-3



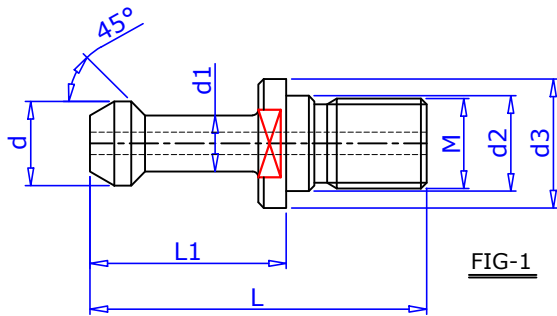
PULL STUDS DIN 69872

FIG-4

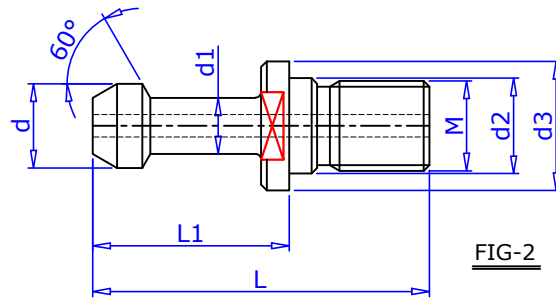
Designation	Tool Shank	M	L	L1	d	d1	d2	d3	FIG
<b>PULL STUDS MAS BT</b>									
BT 30 PS 045 P1	BT 30	M 12	43	23	11	7	12.5	16	1
BT 40 PS 045 P1	BT 40	M 16	60	35	15	10	17	23	1
BT 50 PS 045 P1	BT 50	M 24	85	45	23	17	25	38	1
BT 30 PS 060 P2	BT 30	M 12	43	23	11	7	12.5	16	2
BT 40 PS 060 P2	BT 40	M 16	60	35	15	10	17	23	2
BT 50 PS 060 P2	BT 50	M 24	85	45	23	17	25	38	2
<b>PULL STUDS ISO 7388/2-B</b>									
ISO 30 PS 045 P3	ISO 30	M 12	44	24	12	8	13	16	3
ISO 40 PS 045 P3	ISO 40	M 16	54	26	19	14	17	23	3
ISO 50 PS 045 P3	ISO 50	M 24	74	34	28	21	25	36	3
<b>PULL STUDS DIN 69872</b>									
DIN 30 PS 085 P4	ISO 30	M 12	44	24	13	9	13	17	4
DIN 40 PS 085 P4	ISO 40	M 16	54	26	19	14	17	23	4
DIN 50 PS 085 P4	ISO 50	M 24	74	34	28	21	25	36	4

All Details are subject to change without notice.

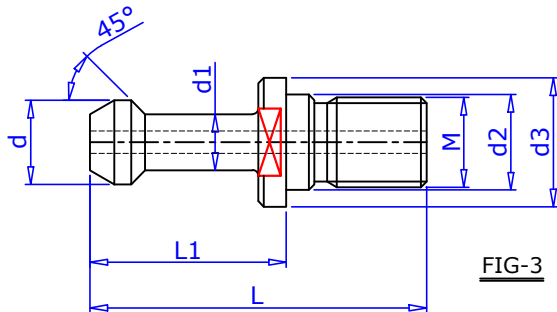
## PULL STUDS THROUGH COOLANT



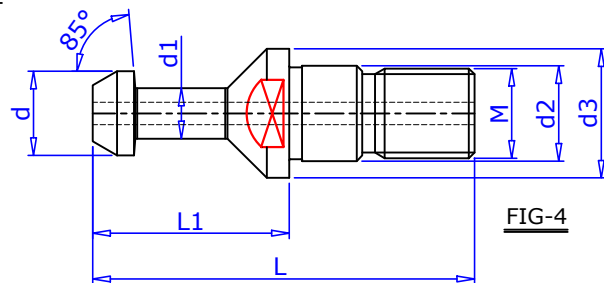
PULL STUDS MAS BT THROUGH COOLENT.



PULL STUDS MAS BT THROUGH COOLENT.



PULL STUDS ISO 7388/2-B THOUGH COOLANT



PULL STUDS DIN 69872 THROUGH COOLANT

Designation	Tool Shank	M	L	L1	d	d1	d2	d3	F	FIG
<b>PULL STUDS MAS BT THROUGH COOLENT</b>										
BT 30 PS 045 P1	BT 30	M 12	43	23	11	7	12.5	16	3.0	1
BT 40 PS 045 P1	BT 40	M 16	60	35	15	10	17	23	7.0	1
BT 50 PS 045 P1	BT 50	M 24	85	45	23	17	25	38	11.5	1
BT 30 PS 060 P2	BT 30	M 12	43	23	11	7	12.5	16	3.0	2
BT 40 PS 060 P2	BT 40	M 16	60	35	15	10	17	23	7.0	2
BT 50 PS 060 P2	BT 50	M 24	85	45	23	17	25	38	11.5	2
<b>PULL STUDS ISO 7388/2-B THROUGH COOLANT</b>										
ISO 30 PS 045 P3	ISO 30	M 12	44	24	12	8	13	16	3.0	3
ISO 40 PS 045 P3	ISO 40	M 16	54	26	19	14	17	23	7.0	3
ISO 50 PS 045 P3	ISO 50	M 24	74	34	28	21	25	36	11.5	3
<b>PULL STUDS DIN 69872 THROUGH COOLANT</b>										
DIN 30 PS 085 P4	ISO 30	M 12	44	24	13	9	13	17	3.0	4
DIN 40 PS 085 P4	ISO 40	M 16	54	26	19	14	17	23	7.0	4
DIN 50 PS 085 P4	ISO 50	M 24	74	34	28	21	25	36	11.5	4

All Details are subject to change without notice.