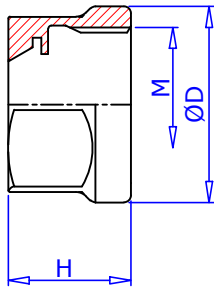
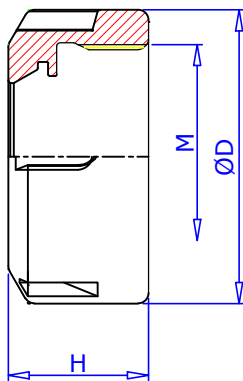


HEXAGONAL NUT FOR 'ER' COLLET CHUCK (DIN6499)



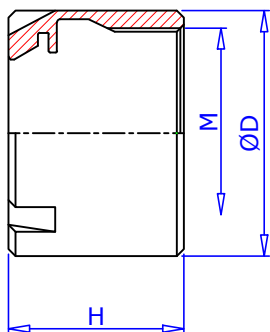
TYPE	H	Ø D	M	SPANNER TO BE USED.
UM/ ER11	11.30	19.0	M14 x 0.75P	GS17
UM/ ER16	17.50	28.0	M22 x 1.5P	GS25
UM/ ER20	19.00	34.0	M25 x 1.5P	GS30

SLOTTED NUT FOR 'ER' COLLET CHUCK (DIN6499)



TYPE	H	Ø D	M	SPANNER TO BE USED.
UM/ ER20	19.0	34	M25 x 1.5P	E 20
UM/ ER25	20.0	42	M32 x 1.5P	E 25
UM/ ER32	22.5	50	M40 x 1.5P	E 32
UM/ ER40	25.5	63	M50 x 1.5P	E 40
UM/ ER50	35.3	78	M64 x 2.0P	E 50

MINI NUT FOR 'ER' COLLET CHUCK (DIN6499)



TYPE	H	Ø D	M	SPANNER TO BE USED.
UM/ ER8M	10.80	12	M10 x 0.75P	E 8M
UM/ ER11M	11.30	16	M13 x 0.75P	E 11M
UM/ ER16M	17.0	22	M19 x 1P	E16 M
UM/ ER20M	19.0	28	M24 x 1P	E20 M
UM/ ER25M	20.0	35	M30 X1P	E25 M

For minimum external diameter.