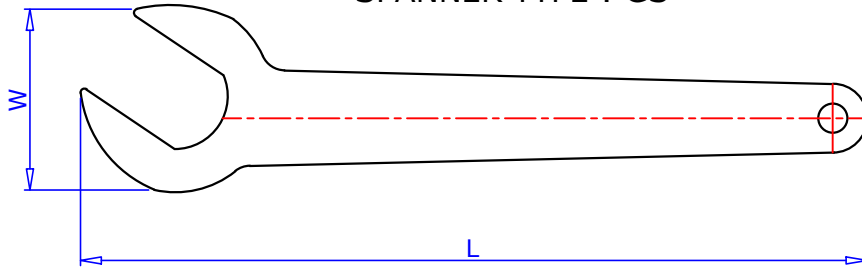
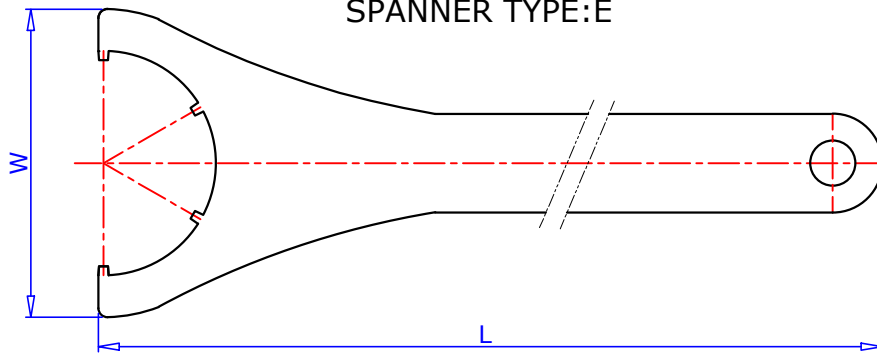


## SPANNER TYPE : GS



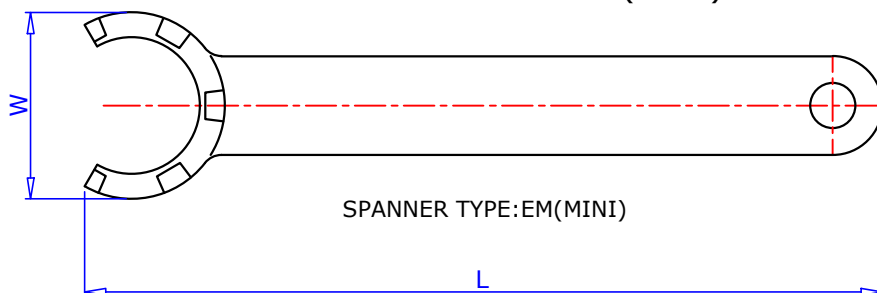
TYPE	L	W	SUITABLE FOR NUT
GS 17	155	36.0	UM/ ER11
GS 25	218	50.0	UM/ ER16
GS 30	265	63.0	UM/ ER20

## SPANNER TYPE:E



TYPE	L	W	SUITABLE FOR NUT
E 20	180	55.0	UM/ ER20
E 25	210	65.0	UM/ ER25
E 32	250	75.0	UM/ ER32
E 40	290	90.0	UM/ ER40
E 50	350	110.0	UM/ ER50

## SPANNER TYPE:EM(MINI)



TYPE	L	W	SUITABLE FOR NUT
E8M	70	12.4	UM/ ER8M
E11M	90	16.8	UM/ ER11M
E16M	110	22.5	UM/ ER16M
E20M	120	29.0	UM/ ER20M
E25M	130	36.0	UM/ ER25M