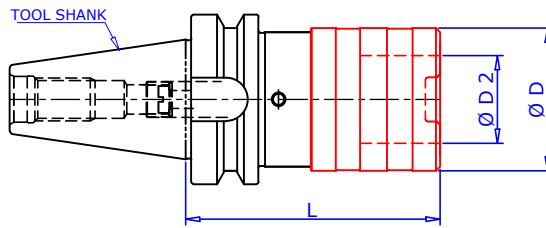


SWIFT CHANGE TAPPING CHUCK (SWFLK) Type SWFLK/BT/MAS 403



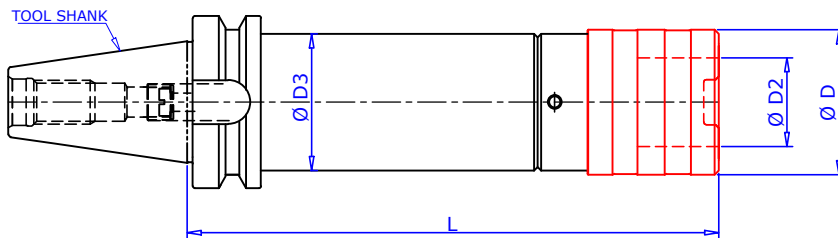
Taper Angle AT3 Class .

Maximum runout of MOUNTING taper to LOCATING INTERNAL dia 0.003mm

Chuck Designation Size	For tap size	Suitable Adaptors	Length Comp.		Ø D	Ø D2	BT30 L	BT40 L	BT 50 L
			Compr.	Expan.					
SWFLK1 / BT #	M3 - M12	SWES1B	7.5	7.5	36	19	64	67.5	77
SWFLK2 / BT #	M8 - M20	SWES2B	12.5	12.5	53	31	----	94.5	102.5
SWFLK3 / BT #	M14 - M33	SWES3B	20	20	78	48	----	164.5	142.5
SWFLK4 / BT #	M22 - M48	SWES4B	22.5	22.5	96	60	----	----	164.5

Ordering Example :- SWFLK2/BT40 QTY. : 2 NOS.

SWIFT CHANGE TAPPING CHUCK (SWFLK) Type SWFLK/BT/MAS 403



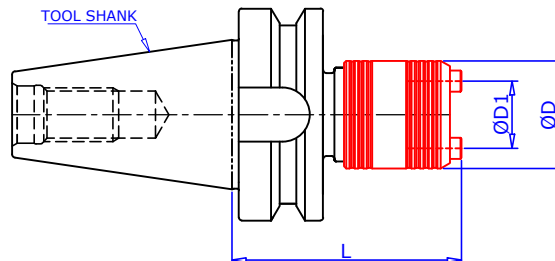
Taper Angle AT3 Class .

Maximum runout of MOUNTING taper to LOCATING INTERNAL dia 0.003mm

Chuck Designation Size.	For Tap Size	Suitable Adaptors.	Length Comp		Ø D	ØD2	ØD3	BT40 L	BT 50 L
			Compr.	Expan.					
SWFLK 1 /BT #	M 3 - M 12	SWE1B	7.50	7.50	36	19	50	150 To 500	150 To 500
SWFLK 2 /BT #	M 8 - M 20	SWE2B	12.50	12.50	53	31	85	150 To 500	150 To 500
SWFLK 3 /BT #	M 14- M33	SWE3B	20.00	20.00	78	48	100	200 To 500	200 To 500

Ordering Example :- SWFLK1 /BT40 QTY : 2 NOS.

RIGID TAPPING CHUCK SQ # / BT40



Taper Angle AT3 Class .

Maximum runout of MOUNTING taper to LOCATING INTERNAL dia 0.003mm

Chuck Designation	Capacity	Suitable Adaptors SWE Size	Ø D1	Ø D	30 L	40 L	50 L
SQ 3-12 /BT	M3 - M12	SWE 1	19.0	32.0	61.5	67.0	77.0
SQ 8-20 /BT	M8 - M20	SWE 2	31.0	50.0	84.5	90.0	100.0

Ordering Example :- SQ 3-12 / BT40 QTY. : 2 NOS.

All Details are subject to change without notice.