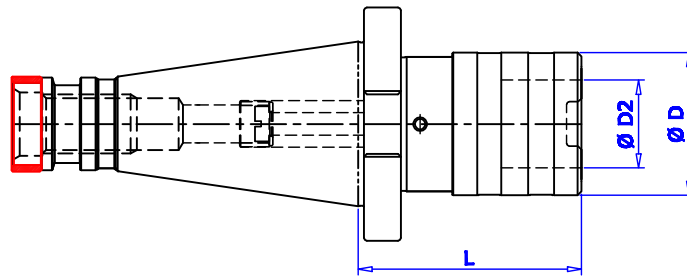


SWIFT CHANGE TAPPING CHUCK (SWFLK)
Type SWFLK / ISO / DIN 2080



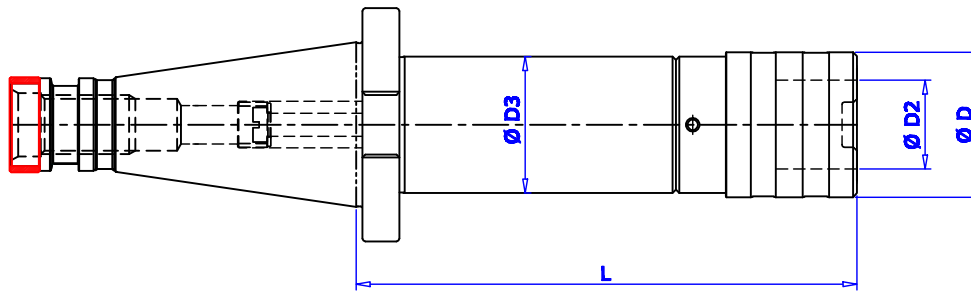
Taper Angle AT3 Class .

Maximum runout of MOUNTING taper to LOCATING INTERNAL dia 0.003mm

CHUCK DESIGNATION SIZE	FOR TAPS SIZE	SUTABLE ADAPTORS	LENGTH COMP.		Ø D	Ø D2	ISO 30 L	ISO 40 L	ISO 50 L
			COMPR.	EXPAN.					
SWFLK 1/ ISO #	M3-M12	SWES 1 B	7.5	7.5	36	19	59	50	59
SWFLK 2/ ISO #	M8-M20	SWES 2 B	12.5	12.5	53	31	97	78	80
SWFLK 3/ ISO #	M14-M33	SWES 3 B	20.0	20.0	78	48	-	143	130

Ordering Example :- SWFLK2 / ISO40 QTY. : 2 NOS.

SWIFT CHANGE TAPPING CHUCK (SWFLK)
Type SWFLK / ISO / DIN 2080



Taper Angle AT3 Class .

Maximum runout of MOUNTING taper to LOCATING INTERNAL dia 0.003mm

CHUCK DESIGNATION SIZE	FOR TAPS SIZE	SUTABLE ADAPTORS	LENGTH COMP.		Ø D	Ø D2	Ø D3	ISO 40 L	ISO 50 L
			COMPR.	EXPAN.					
SWFLK 1/ ISO #	M3-M12	SWES 1 B	7.5	7.5	36	19	50	150-500	150-500
SWFLK 2/ ISO #	M8-M20	SWES 2 B	12.5	12.5	53	31	85	150-500	150-500
SWFLK 3/ ISO #	M14-M33	SWES 3 B	20	20	78	48	100	200-500	200-500

Ordering Example :- SWFLK-1 / ISO40 : 2 NOS.