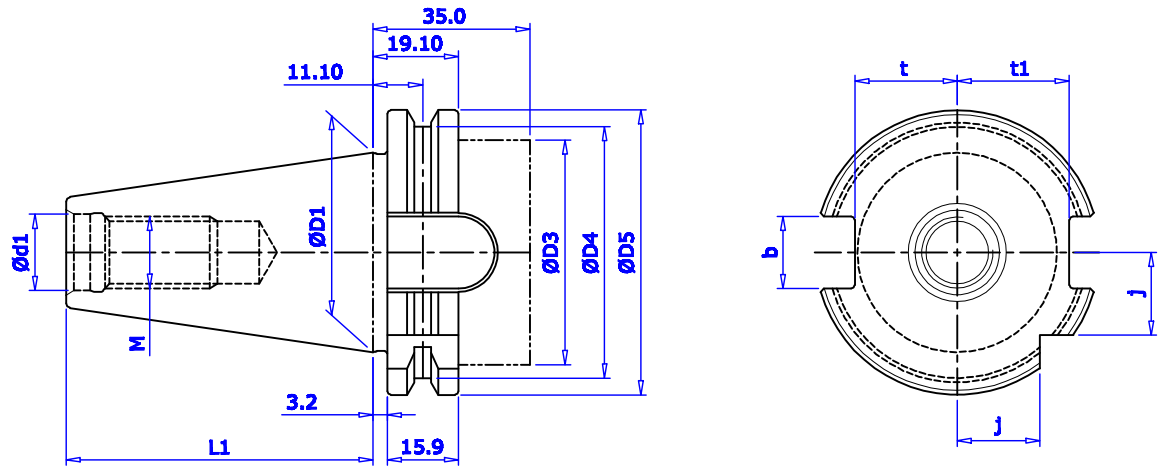
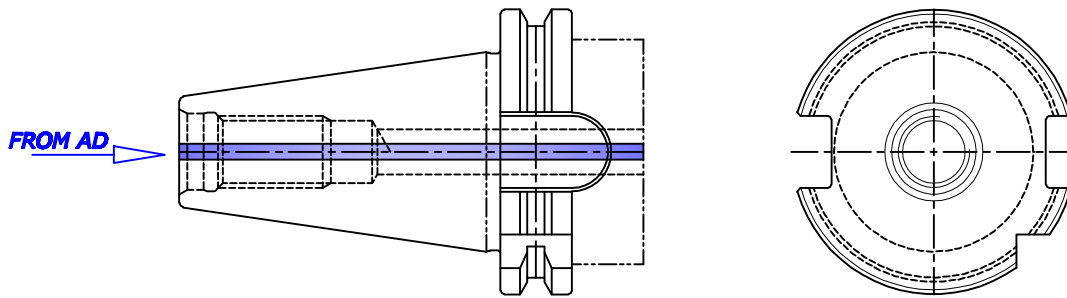


WITHOUT COOLANT (FORM A)

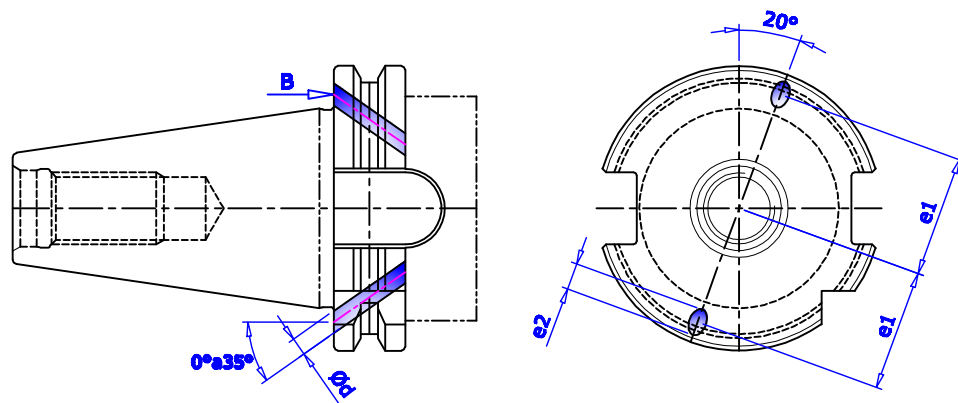


| TAPER | ØD1 | ØD3 | ØD4 | ØD5 | L1 | M | Ød1 | t | t1 | b | j |
|-------|-------|-----|-------|-------|--------|-----|-----|-------|------|-------|------|
| 30 | 31.75 | 45 | 44.30 | 50.0 | 47.80 | M12 | 13 | 16.40 | 19.0 | 16.10 | 15.0 |
| 40 | 44.45 | 50 | 56.25 | 63.55 | 68.40 | M16 | 17 | 22.80 | 25.0 | 16.10 | 18.5 |
| 45 | 57.15 | 63 | 75.25 | 82.55 | 82.70 | M20 | 21 | 29.10 | 31.3 | 19.30 | 25.0 |
| 50 | 69.85 | 80 | 91.25 | 97.5 | 101.75 | M24 | 25 | 35.50 | 37.7 | 25.70 | 30.0 |

WITH COOLANT THROUGH CENTER (FORM AD)



WITH COOLANT THROUGH FLANGE (FORM B)



| TOOLSHANK | Ø d | e 1 | e 2 |
|-----------|-----|-----|-----|
| SK 40 | 4 | 27 | 5 |
| SK 45 | 5 | 35 | 6 |
| SK 50 | 6 | 42 | 7 |