

ADAPTOR WELDON TYPE.

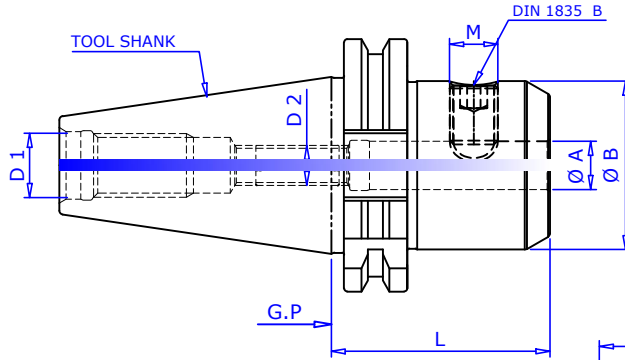


FIG-1

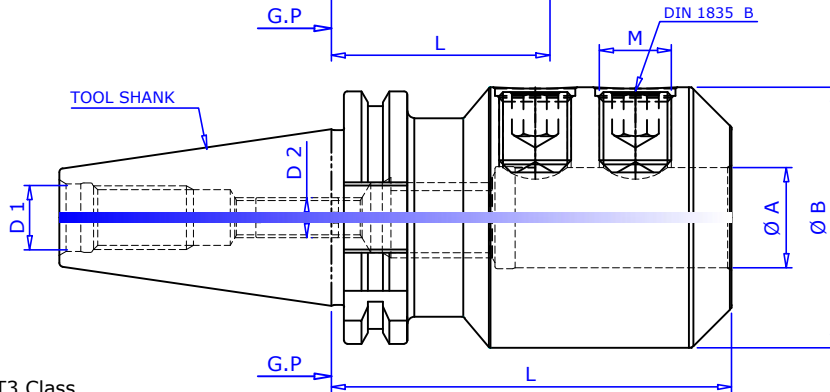


FIG-2

Taper Angle AT3 Class
Maximum runout of MOUNTING taper to INTERNAL dia 0.005mm

Balancing GRADE:- G6.3 /12,000 rev./min STD.

Fine Balancing of Tool Holder:- SPECIFY CLASS (AT EXTRA COST)

Designation	Tool Shank	Ø A H5	L	Ø B	M	D1	D2	FIG
SK 30 WN 06 045 G.P	SK 30	6	45	25	M6	M12	M5	1
SK 30 WN 08 045 G.P	SK 30	8	45	28	M8	M12	M6	1
SK 30 WN 10 050 G.P	SK 30	10	50	35	M10	M12	M8	1
SK 30 WN 12 050 G.P	SK 30	12	50	42	M12	M12	M10	1
SK 30 WN 16 063 G.P	SK 30	16	63	48	M14	M12	M12	1
SK 30 WN 20 063 G.P	SK 30	20	63	52	M16	M12	M16	1
SK 40 WN 06 050 G.P	SK 40	6	50	25	M6	M16	M5	1
SK 40 WN 08 050 G.P	SK 40	8	50	28	M8	M16	M6	1
SK 40 WN 10 050 G.P	SK 40	10	50	35	M10	M16	M8	1
SK 40 WN 12 050 G.P	SK 40	12	50	42	M12	M16	M10	1
SK 40 WN 16 063 G.P	SK 40	16	63	48	M14	M16	M12	1
SK 40 WN 20 063 G.P	SK 40	20	63	52	M16	M16	M16	1
SK 40 WN 25 100 G.P	SK 40	25	100	65	M18 X 2	M16	M20	2
SK 40 WN 32 100 G.P	SK 40	32	100	72	M20 X 2	M16	M20	2
SK 40 WN 40 115 G.P	SK 40	40	115	80	M20 X 2	M16	M20	2
SK 50 WN 06 050 G.P	SK 50	6	50	25	M6	M24	M5	1
SK 50 WN 08 050 G.P	SK 50	8	50	28	M8	M24	M6	1
SK 50 WN 10 063 G.P	SK 50	10	63	35	M10	M24	M8	1
SK 50 WN 12 063 G.P	SK 50	12	63	42	M12	M24	M10	1
SK 50 WN 16 063 G.P	SK 50	16	63	48	M14	M24	M12	1
SK 50 WN 20 063 G.P	SK 50	20	63	52	M16	M24	M16	1
SK 50 WN 25 080 G.P	SK 50	25	80	65	M18 X 2	M24	M20	2
SK 50 WN 32 085 G.P	SK 50	32	85	72	M20 X 2	M24	M20	2
SK 50 WN 32 100 G.P	SK 50	32	100	72	M20 X 2	M24	M20	2
SK 50 WN 40 095 G.P	SK 50	40	95	80	M20 X 2	M24	M20	2
SK 50 WN 40 120 G.P	SK 50	40	120	80	M20 X 2	M24	M20	2
SK 50 WN 50 120 G.P	SK 50	50	120	100	M24 X2	M24	M20	2

Ordering Example :- SK40 WN25 0100 G.P - 2 Nos.

All Details are subject to change without notice.