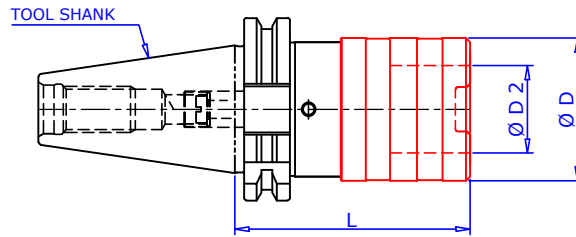


## SWIFT CHANGE TAPPING CHUCK (SWFLK) Type SWFLK/SK/DIN 69871



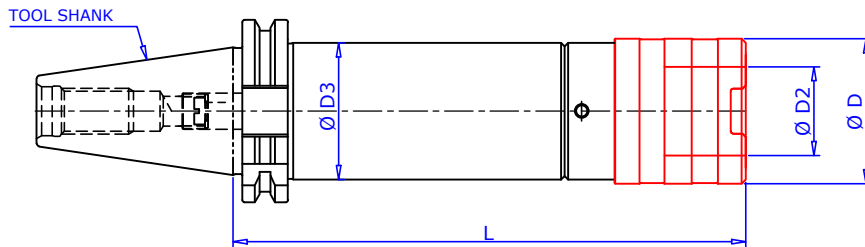
Taper Angle AT3 Class .

Maximum runout of MOUNTING taper to LOCATING INTERNAL dia 0.003mm

Chuck Designation Size	For tap size	Suitable Adaptors	Length Comp.		Ø D	Ø D2	SK 30 L	SK 40 L	SK 50 L
			Compr.	Expan.					
SWFLK1 / SK #	M3 - M12	SWES1B	7.5	7.5	36	19	64.0	60.0	60.0
SWFLK2 / SK #	M8 - M20	SWES2B	12.5	12.5	53	31	----	98.0	84.0
SWFLK3 / SK #	M14 - M33	SWES3B	20	20	78	48	----	150.0	139.0
SWFLK4 / SK #	M22 - M48	SWES4B	22.5	22.5	96	60	----	----	152.0

Ordering Example :- SWFLK2 / SK40 QTY. : 2 NOS.

## SWIFT CHANGE TAPPING CHUCK (SWFLK) Type SWFLK/SK/DIN69871



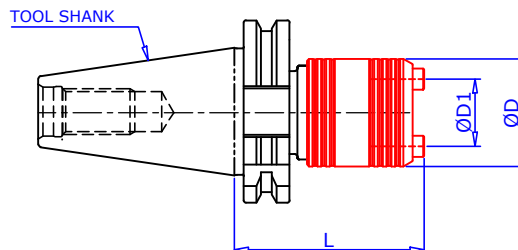
Taper Angle AT3 Class .

Maximum runout of MOUNTING taper to LOCATING INTERNAL dia 0.003mm

Designation Size.	For Tap Size	Suitable Adaptors.	Length Comp		ØD	ØD2	ØD3	SK 40 L	SK 50 L
			Compr.	Expan.					
SWFLK 1 /SK #	M 3 - M 12	SWE1B	7.50	7.50	36	19	50	150 To 500	150 To 500
SWFLK 2 /SK #	M 8 - M 20	SWE2B	12.50	12.50	53	31	85	150 To 500	150 To 500
SWFLK 3 /SK #	M 14 - M33	SWE3B	20.00	20.00	78	48	100	200 To 500	200 To 500

Ordering Example :- SWFLK-1 / SK40 : 2 NOS.

## RIGID TAPPING CHUCK SQ # / SK40



Taper Angle AT3 Class .

Maximum runout of MOUNTING taper to LOCATING INTERNAL dia 0.003mm

Chuck Designation	Capacity	Suitable Adaptors SWE Size	ØD1	ØD	30 L	40 L	50 L
SQ 3-12/SK	M3 - M12	SWE 1	19.0	32.0	59.0	59.0	59.0
SQ 8-20/SK	M8 - M20	SWE 2	31.0	50.0	82.0	82.0	82.0

Ordering Example :- SQ 3-12 / SK40 QTY: 2 NOS.

All Details are subject to change without notice.