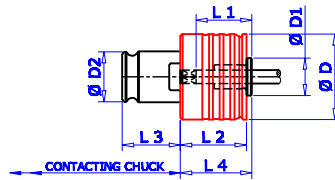


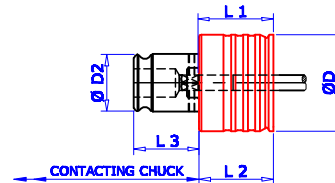
**ADAPTOR TYPE SWES /B**



**Ordering Example :-**  
**SWES 1B M8 Ø10x8 SQ. QTY. : 2 NOS.**

Chuck Designation Size.	For Tap Size	Shank Dia	Suitable For Chuck Size.	Ø D	Ø D1	Ø D2	L1	L2	L3	L4
SWES / 0B	M 1 - M 10	2.5 - 7.2	0	23	13	13	15	20	19.5	21
SWES / 1B	M 3 - M 12	3.5 - 11.3	1	32	19	19	17	25	21.5	25
SWES / 2B	M 8 - M 20	7.0 - 18.0	2	50	30	31	30	31	35.0	34
SWES / 3B	M 14 - M33	11.0 - 28.0	3	72	48	48	44	41	55.5	45
SWES / 4B	M 22 - M48	18.0 - 36.0	4	95	60	60	71	61	63	68

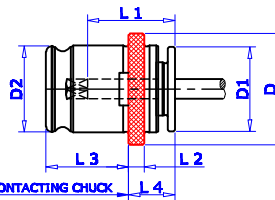
**ADAPTOR TYPE SWESK /B (For Light Duty Application)**



**Ordering Example :-**  
**SWESK 1B M16x1 Ø12.5x10 SQ. QTY. : 2 NOS.**

Chuck Designation Size.	For Tap Size	Shank Dia	Suitable For Chuck Size.	ØD	ØD2	L1	L2	L3
SWESK /1B	M 16	> 11.3 - 12	1	32	19	27.5	25	21.5
SWESK /2B	M 27 - M30	> 18.0 - 22	2	50	31	32.5	31	35.0
SWESK /3B	M 39 - M48	> 28.0 - 36	3	72	48	40.0	41	55.5

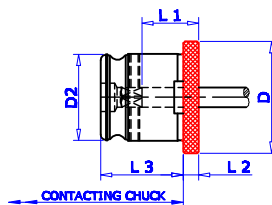
**ADAPTOR TYPE SWE**



**Ordering Example :-**  
**SWE1 Ø6.3x5 SQ. QTY. : 2 NOS.**

Chuck Designation Size.	For Tap Size	Shank Dia	Suitable For Chuck Size	Ø D	Ø D1	Ø D2	L1	L2	L3	L4
SWE 1	M 3 - M 12	3.5 - 11.3	1	30	19	19	17	4	21.5	7
SWE 2	M 8 - M 20	7.0 - 18.0	2	48	30	31	30	5	35.0	11
SWE 3	M 14 - M33	11.0 - 28.0	3	70	48	48	44	6	55.5	14

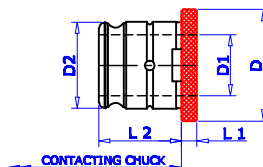
**ADAPTOR TYPE SWEK (For Light Duty Application)**



**Ordering Example :-**  
**SWEK2 Ø20x16 SQ. QTY. : 2 NOS.**

Chuck Designation Size.	For Tap Size	Shank Dia	Suitable For Chuck Size	Ø D	Ø D2	L1	L2	L3
SWEK 1	M 16	> 11.3 - 12	1	30	19	13	4	21.5
SWEK 2	M 27 - M30	> 18.0 - 22	2	48	31	20	5	35.0
SWEK 3	M 39 - M48	> 28.0 - 36	3	70	48	36	6	55.5

**ADAPTOR TYPE SWRE (Reduction Socket)**



**Ordering Example :-**  
**SWRE 2/1 QTY. : 2 NOS.**

Chuck Designation Size.	Suitable For Chuck Size.	Adaptor Size	Ø D	Ø D1	Ø D2	L1	L2
SWRE 2 / 1	2	1	48	19	31.0	5	35.0
SWRE 3 / 1	3	1	70	19	48.0	6	55.5
SWRE 3 / 2	3	2	70	31	48.0	6	55.5
SWRE 4 / 2	4	2	92	31	60.0	13	60.0
SWRE 4 / 3	4	3	92	48	60.0	13	60.0